



The Pavilion at Samuels offers luxury downtown living for an affordable price. Our community boasts thirty-six townhomes with a wide variety of one, two and three bedroom floor plans.

Pavilion at Samuels offers all the amenities and services you expect...with all the comforts of home you deserve.

Blocks from Sundance Square!

## COMMUNITY AMENITIES

1, 2, & 3 Bedroom Townhomes  
Ceiling Fans  
Central Heat and Air  
Washer and Dryer Connections  
Wood Trim  
Modern Kitchens  
Built In Microwaves

\*Available in select homes

## FLOOR PLAN TYPES

1 Bed / 1 Bath 710 Sq. Ft.  
1 Bed / 1.5 Bath Townhome 710 Sq. Ft. Housing Vouchers Accepted  
2 Bed / 1.5 Bath Townhome 1,073 Sq. Ft.  
2 Bed / 2 Bath Townhome 1,124 Sq. Ft.  
3 Bed / 2 Bath Townhome 1,306-1,338 Sq. Ft.

## INTERIORS

Small Gated Community  
Professionally Landscaped Grounds  
On Site Management  
24 Hour Emergency Maintenance  
Walking Distance to Elementary  
Blocks from Sundance Square  
Trinity River Access  
HTC Affordable Property

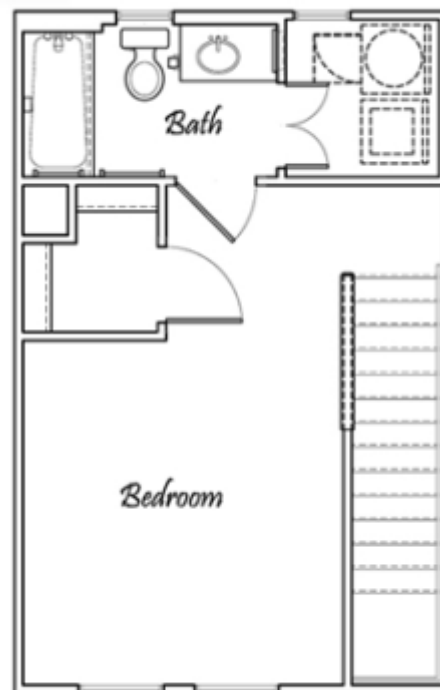
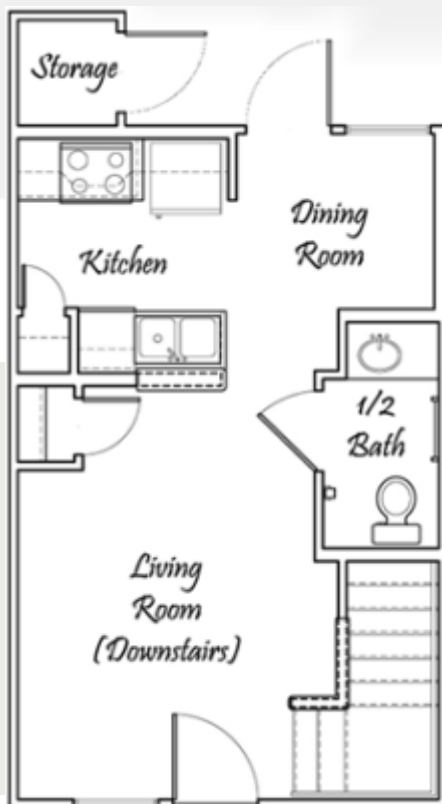
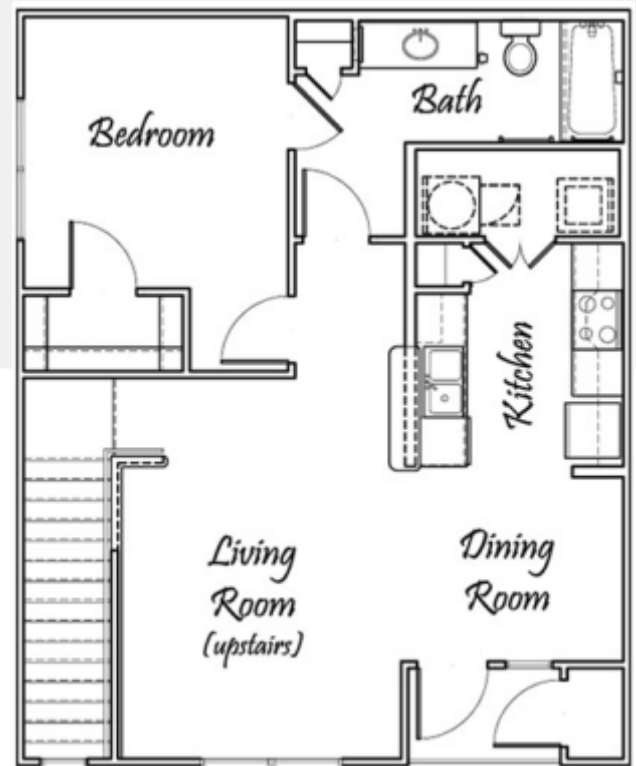
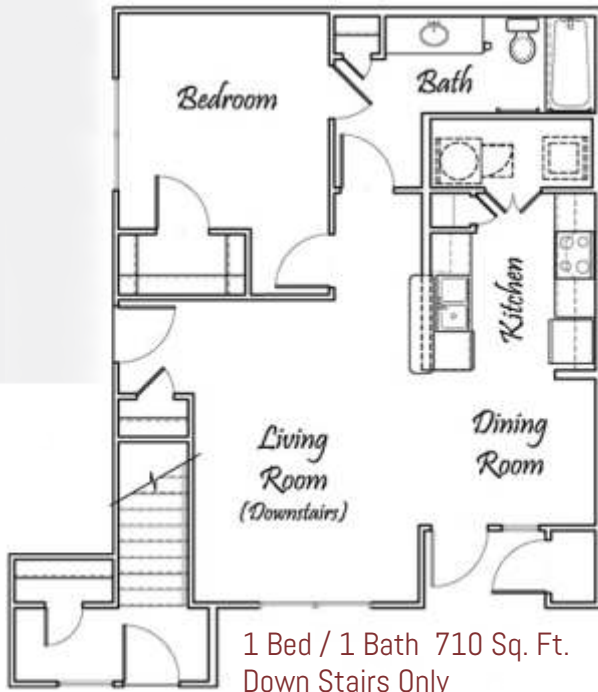


# PAVILION AT SAMUELS

## FLOOR PLAN TYPES

# Visit Us At

PavilionAtSamuels.com



1 Bed / 1.5 Bath 710 Sq. Ft.  
Townhome Bi-Level

1120 Samuels Avenue, Fort Worth, TX 76102

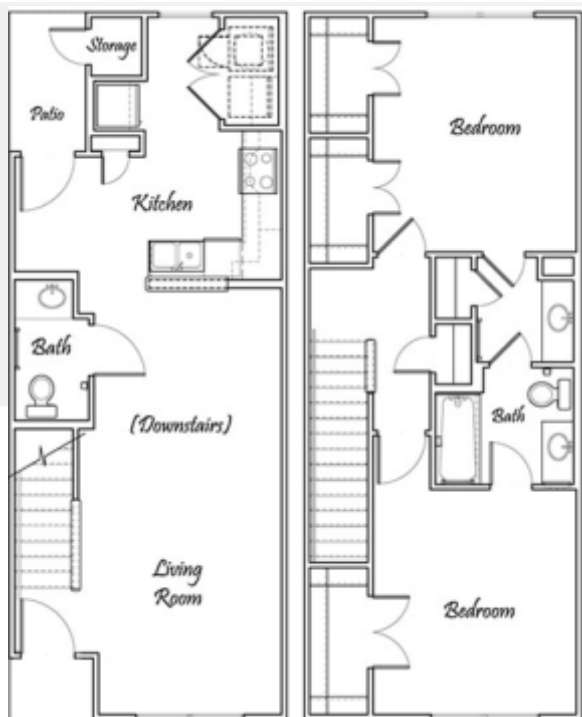
(817) 348-9775

\*Square footage is approximate. Actual floor plans may vary.



# PAVILION AT SAMUELS

## FLOOR PLAN TYPES



2 Bed / 1.5 Bath 1,073 Sq. Ft.  
Townhome Bi-Level

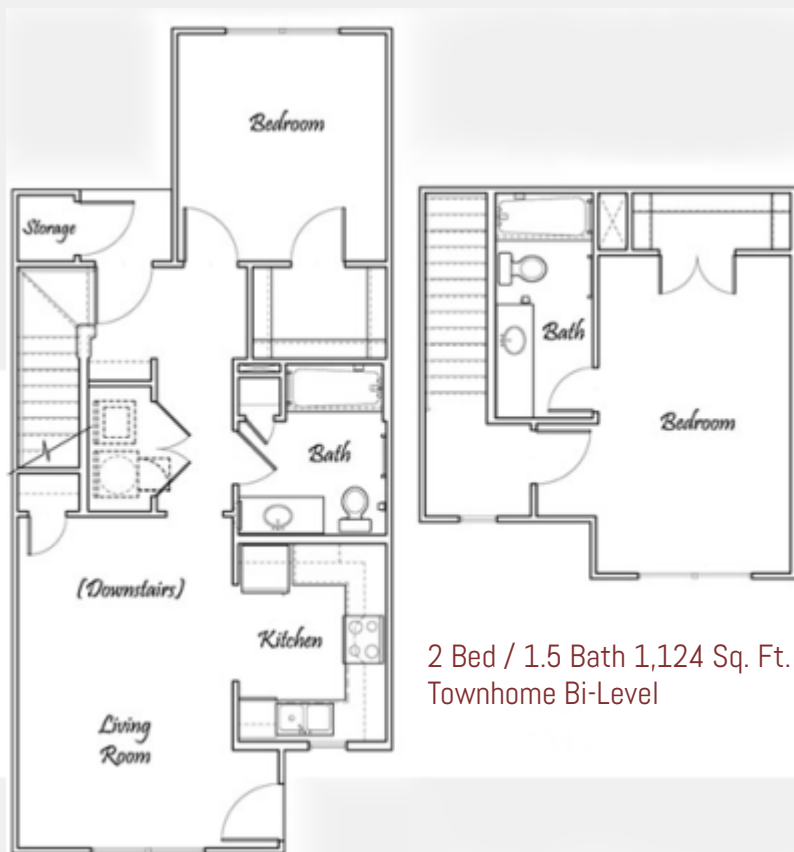


3 Bed / 2 Bath 1,306 Sq. Ft.  
Townhome Bi-Level

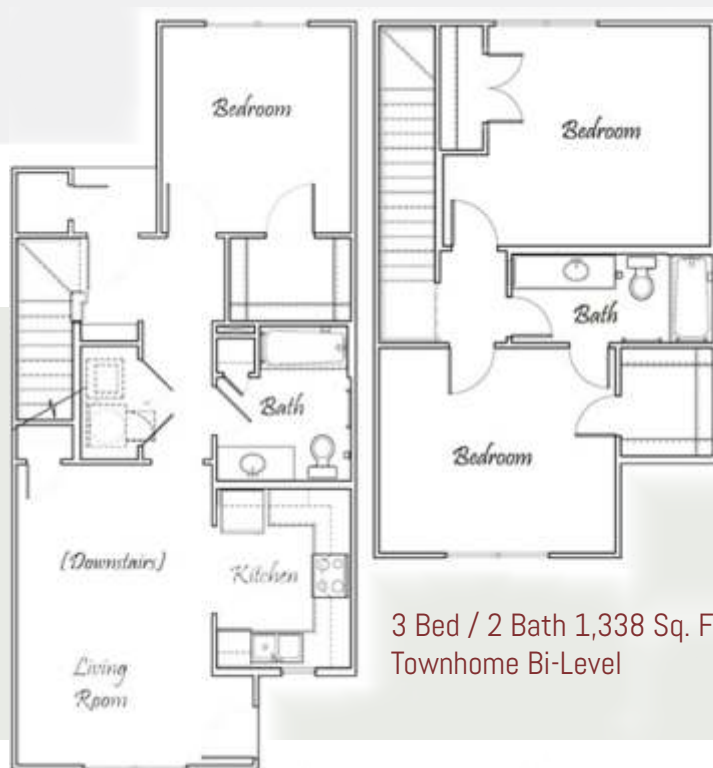
(817) 348-9775

# Visit Us At

PavilionAtSamuels.com



2 Bed / 1.5 Bath 1,124 Sq. Ft.  
Townhome Bi-Level



3 Bed / 2 Bath 1,338 Sq. Ft.  
Townhome Bi-Level

1120 Samuels Avenue, Fort Worth, TX 76102

\*Square footage is approximate. Actual floor plans may vary.

